

High definition stand-alone modulator

MAW-300 modulator it is an all-in-one device integrating MPEG-4 AVC/H.264 encoding and modulating to convert audio/video signals into DVB-T RF out.



HDMI



HDMI input
High Definition
Multimedia Interface

CVBS



CVBS input
and audio stereo



Encoding
H.264/MPEG4
MP@L 3.0/3.1/4.0

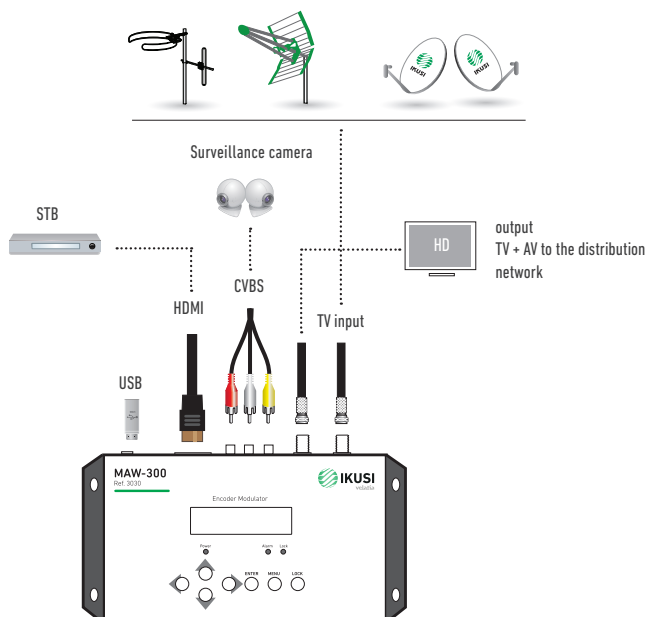


LCN insertion

Technical Specifications

MODEL		MAW-300
REF.		3030
Video input		CVBS, HDMI
HDMI encoding section		
Standard		PAL/NTSC/SECAM/B&W
Audio input		1 (mono y estéreo)
Encoding		H.264/MPEG4 MP@L 3.0/3.1/4.0
Video resolution		input: 480i60, 576i50, 720p60, 1080i50, 1080i60, 1080p60 output: 480p30, 576p25, 720p60, 1080p25, 1080p30
Aspect ratio		16:9, 4:3
Video Bit rate		Mbps 1000 - 18000
Audio sample rate		kHz 48
Audio Bit rate		kbps 64, 96, 128, 192, 256, 320
DVB-T Modulator section		
Standard		DVB-T
Bandwidth		MHz 6, 7, 8
Constellation		QPSK, 16QAM, 64QAM
Guard interval		1/32, 1/16, 1/8, 1/4
Code rate		1/2, 2/3, 3/4, 5/6, 7/8
Transmission mode		2K, 8K
MER		dB ≥32
RF frequency		MHz 139 - 862
RF output level		dBμV 94 - 104 (0,1 dB step)
General		
Management		Local LCD + control buttons
LCN insertion		Yes
Upgrade		USB
Power supply		VDC 12
Operating temperature		°C 0 - 45
Dimensions		mm 183 x 110 x 50
Weight		kg 1

Example d'installation



Main features

- Household modulator that allows audio and video signals to be inserted into TV distributions.
- The input source can be: a Blu-ray player, satellite receiver, closed circuit surveillance camera, DVD, etc.
- Audio/Video → DVB-T
- A digital video and audio channel in HDMI format, HDMI connector.
- An analogical CVBS audio and video channel, RCA connectors.
- MPEG4/H.264 coding in HD.
- Cascade installation.
- Possibility of changing the LCN.
- Local configuration with LCD screen.

Typical Applications

- Communities of residents an information channel on their television.
- Restaurants (information about daily menus, special deals, etc.).
- Hotels (meeting rooms, exhibitions, message, etc).
- Hospitals (Information health guides).
- Public Spaces (adversing, user information, news, etc.).
- Shopping centres (news collections, special deals, etc.).
- Boats (Logbook information, activities, schedules).

... for Public Spaces

adversing, user information, news, etc.



... for shopping centres

news collections, special deals, etc.



... for communities of residents

an information channel on their television.



... for restaurants

information about daily menus, special deals, etc.



... for hotels

meeting rooms, exhibitions, message, etc.

